

WARNING

Watch out for shallow water in the south side of NUMAZU Port

Vessels arriving in and departing from Numazu port should take a strict attention on the shallow water.

The depth of that area on old charts, old GPS date etc. is quite different from reality.

~TO Prevent grounding accidents~

- ☞ Prior check on course line including depth of water.
(Use latest charts (GPS date).)
- ☞ Correct understanding on your position.
(Special care on sea current and river flow.)
- ☞ Appropriate maneuver according to weather and sea-state

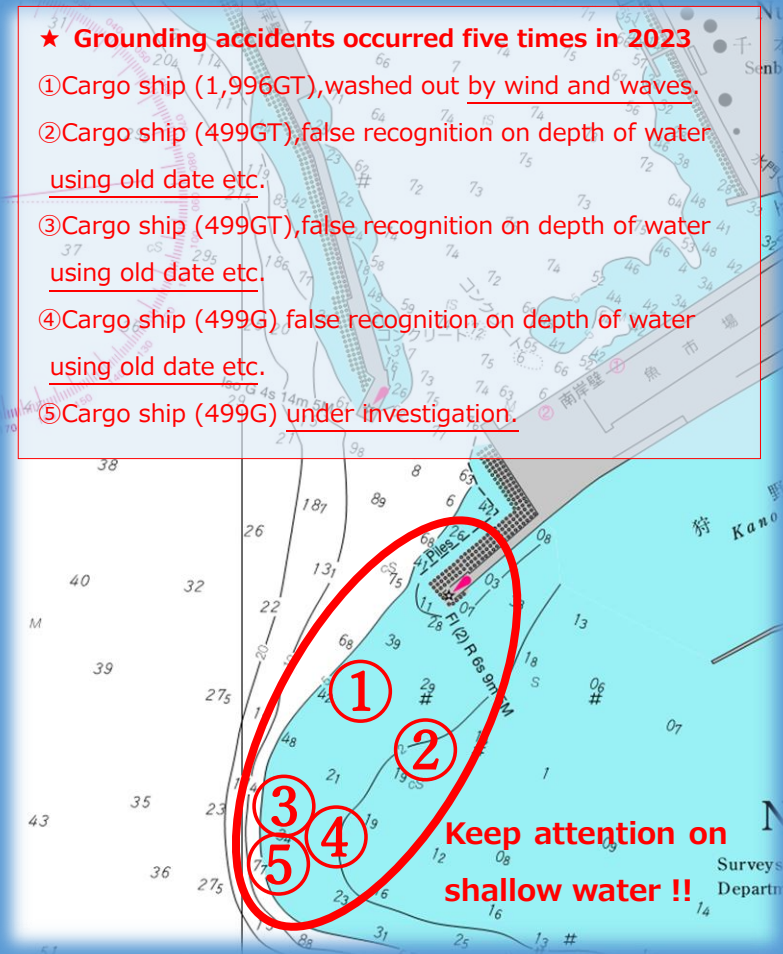


©JCGF

*Note that the chart on the diagram on the right is an older version, and the depth shown here does NOT reflect the actual one. It is only used to address the grounding incidents. Please use the latest for your navigation.

★ Grounding accidents occurred five times in 2023

- ① Cargo ship (1,996GT), washed out by wind and waves.
- ② Cargo ship (499GT), false recognition on depth of water using old date etc.
- ③ Cargo ship (499GT), false recognition on depth of water using old date etc.
- ④ Cargo ship (499GT) false recognition on depth of water using old date etc.
- ⑤ Cargo ship (499GT) under investigation.



Keep attention on
shallow water !!



Shimizu Coast Guard Office



海の安全情報

Created in
October 2023,