

Be careful of the collision



with **maritime facilities** by dragging anchor!

In September 2018, a tanker dragged anchor in a typhoon and collided with the Kansai Airport Connecting Bridge.

- Tokyo Bay also has many maritime facilities.
- To prevent accidents of the same kind, please take all possible measures against dragging anchor in stormy weather.



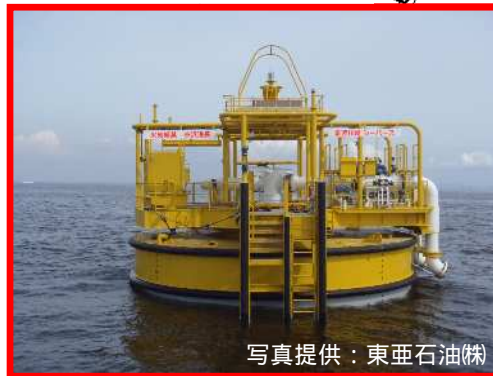
撮影：羽田航空基地

【 HANEDA airport 】



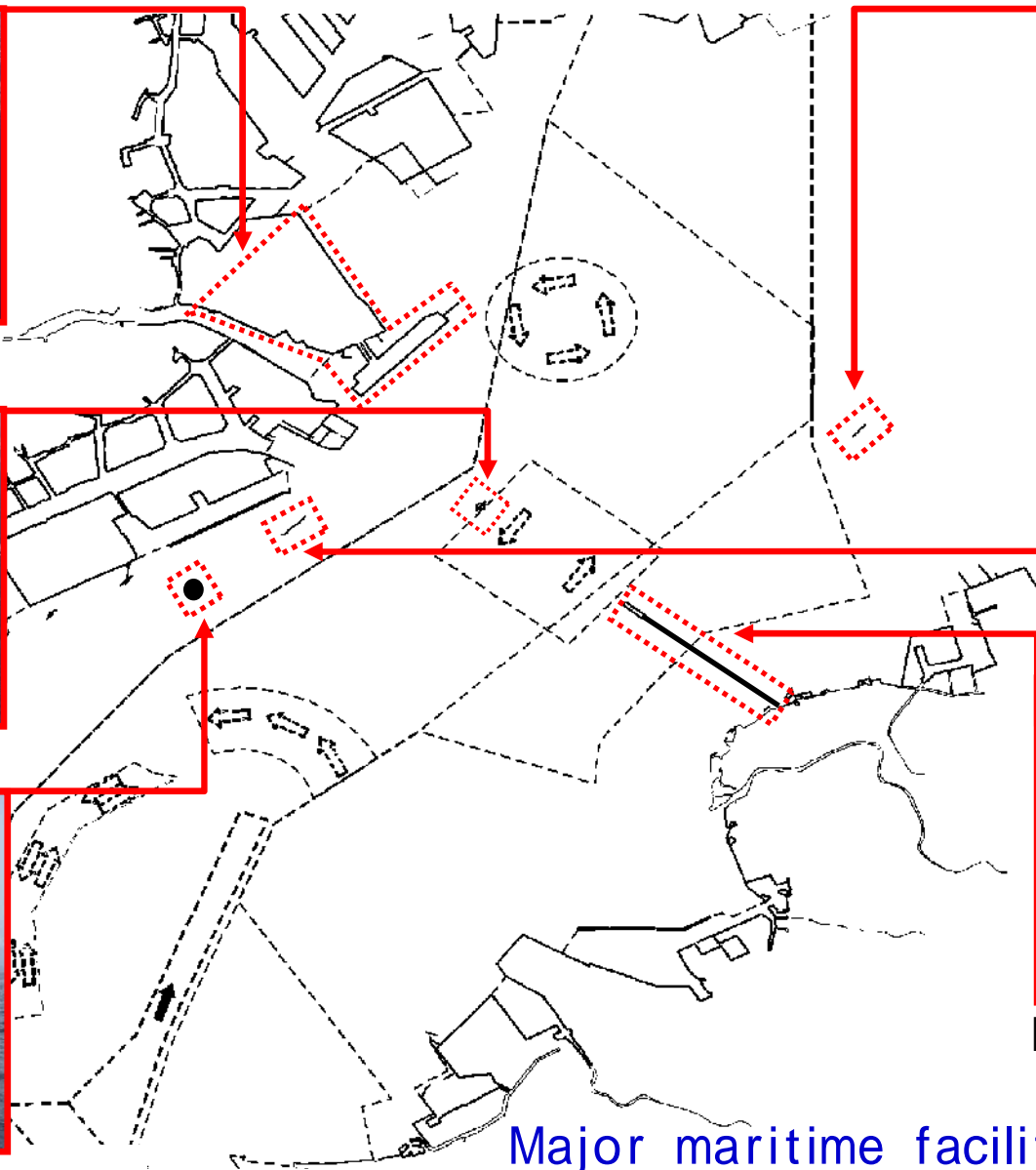
写真提供：NEXCO 東日本

【 Kazenoto 】



写真提供：東亜石油㈱

【 Sea-Berth 】



写真提供：京葉シーバス㈱

【 Sea-Berth 】



写真提供：NEXCO 東日本

【 Umihotaru / Tokyo Wan Aqua Line 】

Major maritime facilities in Tokyo Bay

To prevent accidents by the dragging anchor, please enforce the following:

Getting the latest weather information

Proper lookout all the time

Anchoring method according to the water depth

and weather conditions

Use of the adequate length of anchor and anchor chains

Keeping watch on VHF ch16 and full-time operation of AIS

Keeping enough distance from maritime facilities,

other vessels and the shore

Standby of engines and readiness of crew

Safety first!

