

Guideline to inform destination by AIS
Port Regulations Law

[The way to input the destination data]

Destination code in AIS data

>00 000 00 000
① ② ③

① Port of destination

② Course inside the port

③ Sailing route to pass through on the way, etc.

[Input Example] To Berth at Osaka Area, Hanshin Port

>JP OSA 2T
① ②

① Destined for Osaka Area, Hanshin Port

② Heading for the mooring facilities to the west of Tenpozan Oohashi, 2nd area in the port

Maritime Traffic Safety Law

[Input Example]

Destination Port is the Hannan Port

>JP HAN 000
① ②

① Hannan Port as destination

② Places to pass through on the way

Number	Prefecture	Port Name	Port Code	Number	Prefecture	Port Name	Port Code
1		HANSHIN OSAKAKU	JP OSA	67		TOKUSHI MAKOMATSUJIMA	JP TKX
2	OSAKA	HANSHIN SAKAI SENBOKUKU	JP SBK	68		MUYA	JP MYA
3	HYOGO	HANSHIN KOBEKU	JP UKB	69		IMAGIRE	JP IGR
4		HANSHIN AMAGASAKI HISHINOMIYAASHIYAKU	JP AMX	70		TOMIOKA	JP TOM
5		HANNAN	JP HAN	71	TOKUSHIMA	TACHIBANA	JP TBN
6	OSAKA	SENSYU	JP SSU	72		YUKI	JP YUK
7		FUKE	JP FUE	73		HIWASA	JP HWS
8		HIMEJI	JP HIM	74		MUGI	JP MUG
9		HIGASHIHARIMA	JP HHR	75		ASAKAWA	JP ASW
10		AKASHI	JP AKA	76		SHISHIKUI	JP SIS
11		YAGI	JP YAG	77		SAKAIDE	JP SKD
12		AIOI	JP AIO	78		TAKAMATSU	JP TAP
13		AKO	JP AKO	79		TOYOHAMA	JP TYH
14		IWAYA	JP IWY	80		KANNONJI	JP KJN
15	HYOGO	TSUNA	JP TNA	81		NIO	JP NIO
16		SUMOTO	JP SUH	82		TAKUMA	JP TKM
17		YURA	JP YRA	83		TADOTSU	JP TAD
18		FUKURA	JP FRA	84		MARUGAME	JP MAR
19		MNATO	JP MNT	85	KAGAWA	KOZAI	JP KZJ
20		TSUSHI	JP TSH	86		SHIDO	JP SID
21		GUNGE	JP GNG	87		TSUDA	JP TUD
22		TOSHIMA	JP TJO	88		SANBONMATSU	JP SAN
23		WAKAYAMASHIMOTSU	JP WAK	89		HIKETA	JP HEA
24		TANABE	JP TAE	90		SAKATE	JP SAT
25		SHINGU	JP SHN	91		UCHINOMI	JP UCN
26		UKUI	JP UKI	92		IKEDA	JP IKA
27		KATSUURA	JP KAT	93		TONOSYO	JP TNO
28	WAKAYAMA	URAGAMI	JP URM	94		NAOSHIMA	JP NAS
29		KOZANISHIMUKAI	JP KOB	95		MATSUYAMA	JP MYJ
30		KUSHIMOTO	JP KUJ	96		IMABARI	JP IMB
31		HIKI	JP HIK	97		NIHAMA	JP IHA
32		HIDAKA	JP HDK	98		FUKAURA	JP FKR
33		YURA	JP YUR	99		UWAJIMA	JP UWA
34		YUASAHIRO	JP YSH	100		YOSHIDA	JP YSD
35		UNO	JP UNO	101		MIKAME	JP MKM
36		MIZUSHIMA	JP MIZ	102		YAWATAHAMA	JP YWH
37		HINASE	JP HIN	103		KAWANOISHI	JP KWI
38		KATAKAMI	JP KKM	104		MISAKI	JP MSX
39		TSURUMI	JP TRU	105		MITSUKUE	JP MTK
40		USHIMADO	JP USH	106	EHIME	NAGAHAMA	JP NGH
41	OKAYAMA	SAIDAIJI	JP SDZ	107		GUNTYU	JP IYO
42		KOGUSHI	JP KOG	108		HOJO	JP HJO
43		OKAYAMA	JP OKP	109		KIKUMA	JP KIK
44		HIBI	JP HIB	110		YOSHITUMI	JP YHI
45		KOTOURA	JP JKT	111		NYUGAWA	JP NWA
46		AJINO	JP AJN	112		SAIJO	JP SAJ
47		SHIMOTSUI	JP STI	113		SANGAWA	JP SAW
48		KASAOKA	JP KSA	114		MISHIMAKAWANOE	JP MKX
49		FUKUYAMA	JP FKY	115		OKAMURA	JP OMR
50		ONOMICHIITOSAKI	JP ONX	116		MIYAUURA	JP MYU
51		KURE	JP KRE	117		HAKATA	JP HKS
52		HIROSHIMA	JP HUJ	118		KOCHI	JP KCZ
53		TADANOUMI	JP TDN	119		KANNOURA	JP KRA
54		TAKEHARA	JP THR	120		MUROTOMISAKI	JP MRJ
55		AKITSU	JP AKT	121		MUROTTSU	JP MJX
56		OTAKE	JP OTK	122		NAHARI	JP NHI
57	HIROSHIMA	HABU	JP HAB	123		USA	JP USA
58		SHIGEI	JP SIG	124	KOCHI	SUSAKI	JP SUZ
59		SAGI	JP SGJ	125		KURE	JP KUE
60		SETODA	JP STD	126		KAMINOKAE	JP KMK
61		MEBARUZAKI	JP MBR	127		SAGA	JP SGA
62		KINOE	JP KNE	128		KAMIKAWAGUCHI	JP KMW
63		MITARAI	JP MTI	129		SHIMODA	JP SMO
64		ONISHI	JP ONS	130		SHIMIZU	JP TSZ
65		KAMAGARI	JP KGR	131		SUKUMOWAN	JP SUK
66		ITSUKUSHIMA	JP ITS				

As for the detailed information, see Public Notice Number 94 of Japan Coast Guard, issued in 2010

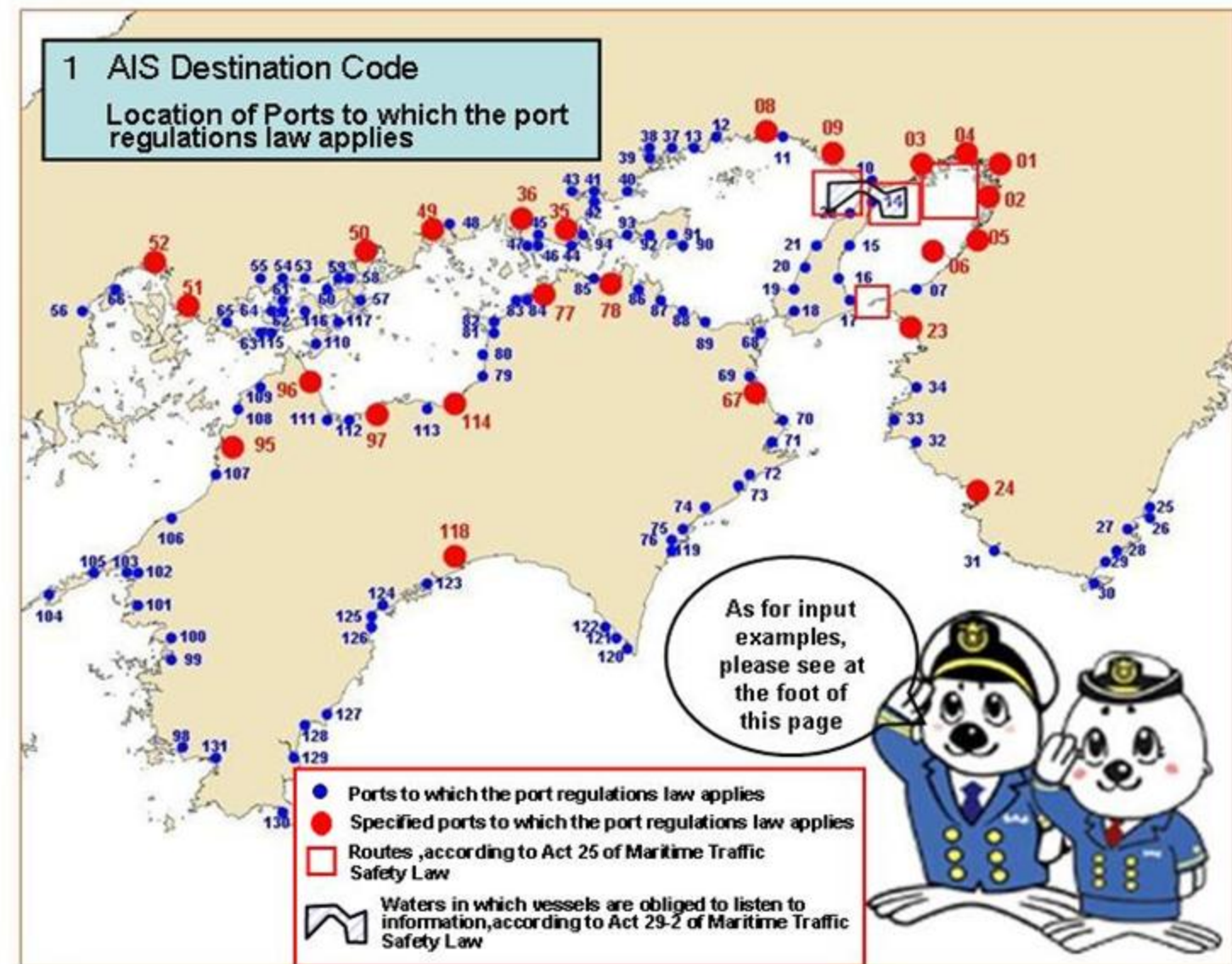
Notification of the Amendments to Port Regulations Law and Maritime Traffic Safety Law

5th Regional Coast Guard Headquarters

Amended Port Regulations Law and Maritime Traffic Safety Law will be enter into force on after July 1, 2010. Major amended points with respect to navigating in Oosaka Bay are as follows.

Notice

- 1 A vessel equipped with AIS shall transmit the codes regarding the port of destination and the course as AIS-based navigational information for destination.
- 2 A vessel shall navigate through the passages designated in the public notice to the greatest possible extent in order to keep good order in vessel traffic, in the waters around Sumoto-Oki Light Buoy and Yura-seto, Northern Waters of Osaka Bay, East Entrance/Exit and West Entrance/Exit of Akashi Kaikyo Traffic Route.
- 3 A vessel of 50 meters or more in length navigating through or in the vicinity of Akashi Kaikyo Traffic Route shall listen to information provided by Osaka Wan Traffic Advisory Service Center and report to the Center if she receive the advice to prevent the danger and is requested to report her measure from the Center.



Contact Info for Inquiries

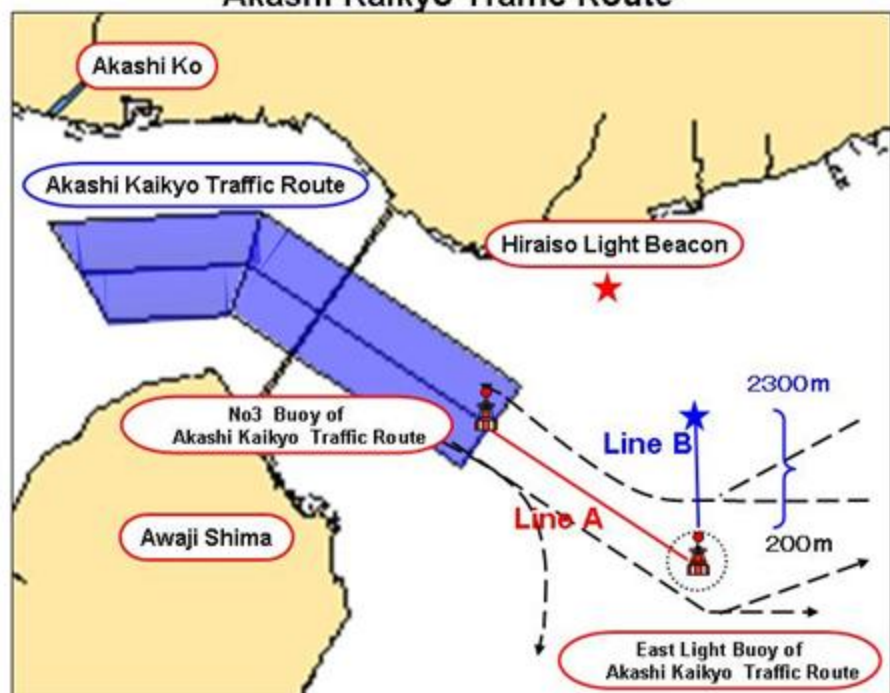
Safety Section, Maritime Traffic Department, 5th Regional Coast Guard Headquarters

Tel. 078-391-6551

<http://www.kaiho.mlit.go.jp/05kanku/>

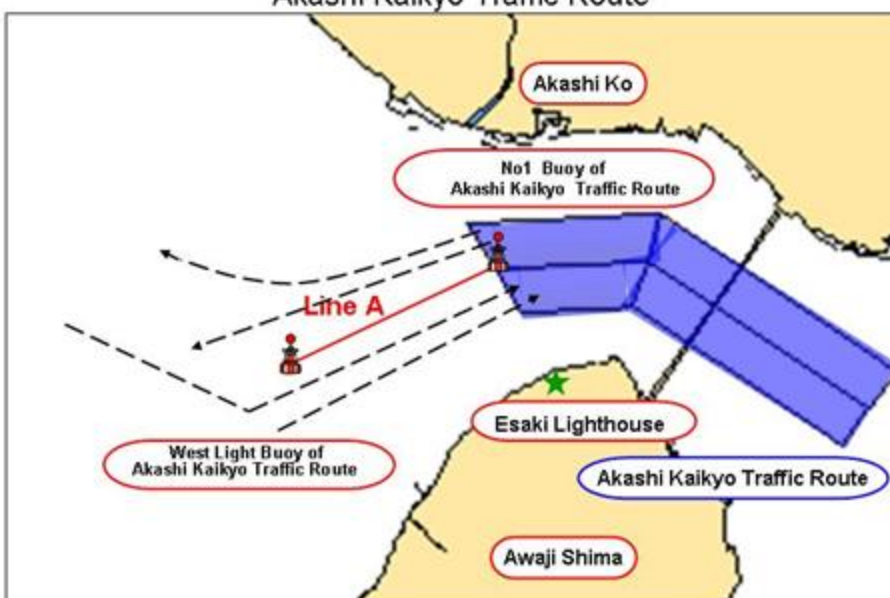
2 Traffic Routes according to Act 25 of Maritime Traffic Safety Law

Routes in the waters around East Entrance/Exit of Akashi Kaikyo Traffic Route



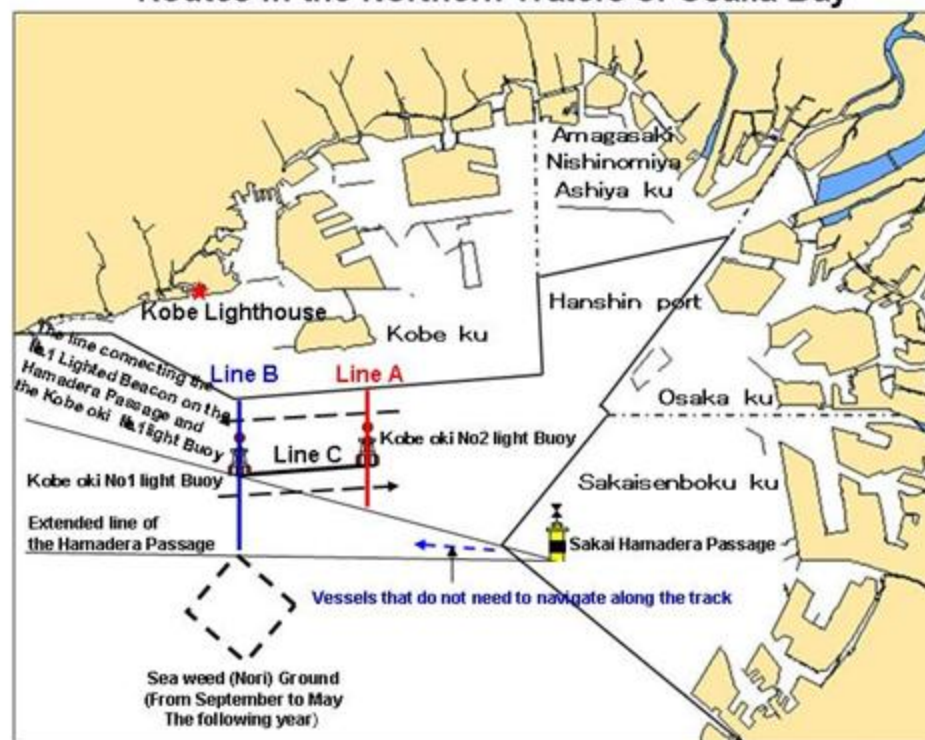
- 1 The vessel of 50 meters or more in length heading westward along Akashi Kaikyo Traffic Route shall, navigate in the waters north of Line A, and navigate crossing Line B (navigate in the waters more than 200 meters away from East Light Buoy of Akashi Kaikyo Traffic Route).
- 2 The vessel of 50 meters or more in length heading eastward along Akashi Kaikyo Traffic Route shall, navigate in the waters south of Line A, and navigate in the waters more than 200 meters away from East Light Buoy of Akashi Kaikyo Traffic Route.

Routes in the waters around West Entrance/Exit of Akashi Kaikyo Traffic Route



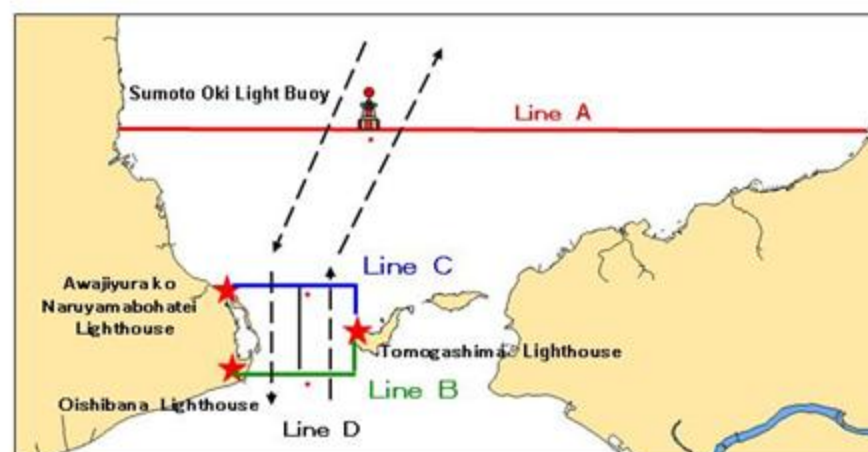
- 1 The vessel of 5,000 gross tons or more heading westward along Akashi Kaikyo Traffic Route shall navigate in the waters north of Line A.
- 2 The vessel of 5,000 gross tons or more heading eastward along Akashi Kaikyo Traffic Route shall navigate in the waters south of Line A.

Routes in the Northern Waters of Osaka Bay



- 1 The vessel of 500 gross tons or more crosses Line B after crossing Line A, shall navigate in the waters north of Line C.
- 2 The vessel of 500 gross tons or more crosses Line A after crossing Line B, shall navigate in the waters south of Line C.

Traffic Routes in the waters around Sumoto Oki Light Buoy and Yura-seto



- 1 The vessel which crosses Line B after crossing Line A or a vessel which crosses Line A after crossing Line B shall navigate with Sumoto Oki Light Buoy on the port side.
- 2 The vessel which crosses Line B after crossing Line C shall navigate in the waters west of Line D, navigate in the waters more than 150 meters away from Line D.
- 3 The vessel which crosses Line C after crossing Line B shall navigate in the waters east of Line D, navigate in the waters more than 150 meters away from Line D.

3 Waters in which vessels shall listen to information provided by Osaka Wan Traffic Advisory Service Center

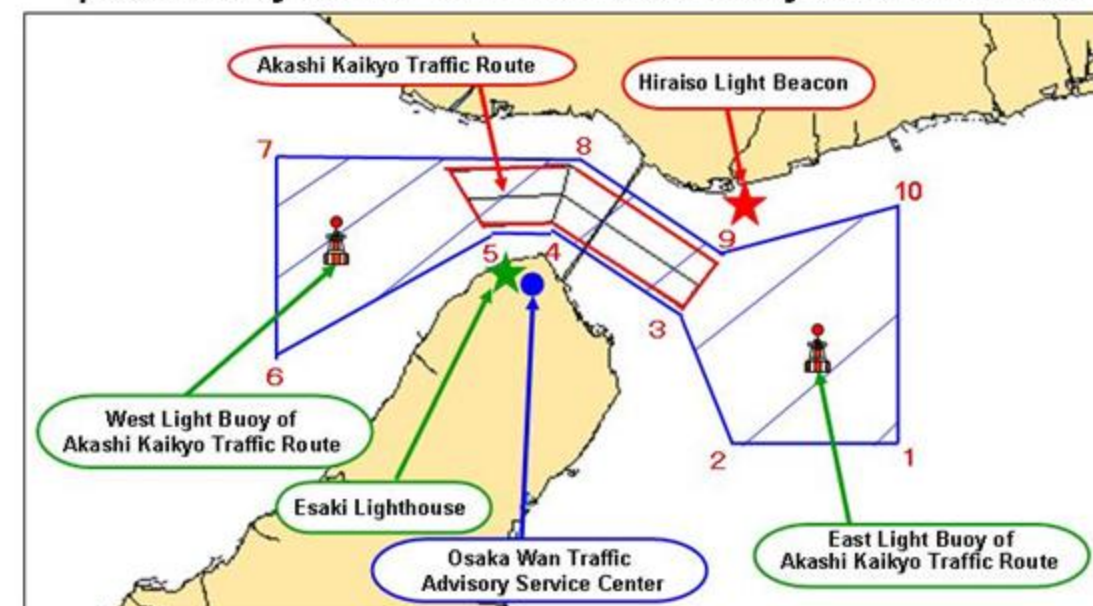


Table of numbered points in the map above

1	151 degrees and 7000 meters from Hiraiso Light Beacon	6	240 degrees and 7220 meters from Esaki Lighthouse
2	190 degrees and 6230 meters from Hiraiso Light Beacon	7	291 degrees and 6700 meters from Esaki Lighthouse
3	215 degrees and 3650 meters from Hiraiso Light Beacon	8	30 degrees and 3310 meters from Esaki Lighthouse
4	50 degrees and 1450 meters from Esaki Lighthouse	9	215 degrees and 1750 meters from Hiraiso Light Beacon
5	328 degrees 30 minutes and 980 meters from Esaki Lighthouse	10	90 degrees and 3380 meters from Hiraiso Light Beacon

※ Information is provided via VHF radio telephone

Listen to VHF radio telephone in the waters around Akashi Kaikyo Traffic Route



Routes are specified in addition to the designated passages

